



## 1. Product Name

■ PFlow F Series Mechanical Vertical Lifts

## 2. Manufacturer

PFlow Industries, Inc.  
6720 N. Teutonia Avenue  
Milwaukee, WI 53209  
Phone: (414) 352-9000  
Fax: (414) 352-9002  
Email: [info@pflow.com](mailto:info@pflow.com)  
Web: [www.pflow.com](http://www.pflow.com)

## 3. Product Description

PFlow Industries, Inc. has been an industry-leading provider of custom engineered vertical reciprocating conveyors (VRCs) for nearly 40 years. Today, with more than 17,000 vertical lifts sold worldwide, PFlow Industries offers a full line of custom engineered hydraulic, mechanical and fully automated VRC systems.

### Basic Use

PFlow F Series Mechanical Vertical Lift is a versatile lift for heavy-duty vertical applications. Manufactured to ANSI/ASME B20.1 safety standards, F Series is capable of capacities to 50,000 lbs or more. It easily transports large carts, pallet loads and heavy machinery between multiple levels.

F Series features a rugged four-post design and four-corner support, custom speeds as high as 400 fpm, and can be configured to allow load and unload from any of the four sides. It is available for interior or exterior use within new or existing buildings and is ideal for venues with heavy industrial equipment and multiple pallets.

### Materials, Composition

Each F Series Mechanical Vertical Lift has a frame, drive base and four corner-sprocket column assemblies, plus a moving carriage and built-in advanced safety features. Each level of the lift has an NEMA 12-compliant control panel and a push-button station that allows full call-and-send control from any level.

The frame has four vertical lift columns, which are anchored to the floor at the first level. At the second and additional levels, the frame is braced to the building structure. The drive base has a motor, brake, gear reducer, drive sprockets, a drive shaft, bearings



and support structure. The carriage is fabricated of 6" structural members with a steel deck plate. Additional deck surfaces are available. An electric motor/reducer assembly, which is mounted to the guide columns, lifts and lowers the carriage.

Primary components of the F Series Mechanical Vertical Lift are the guide columns and carriage.

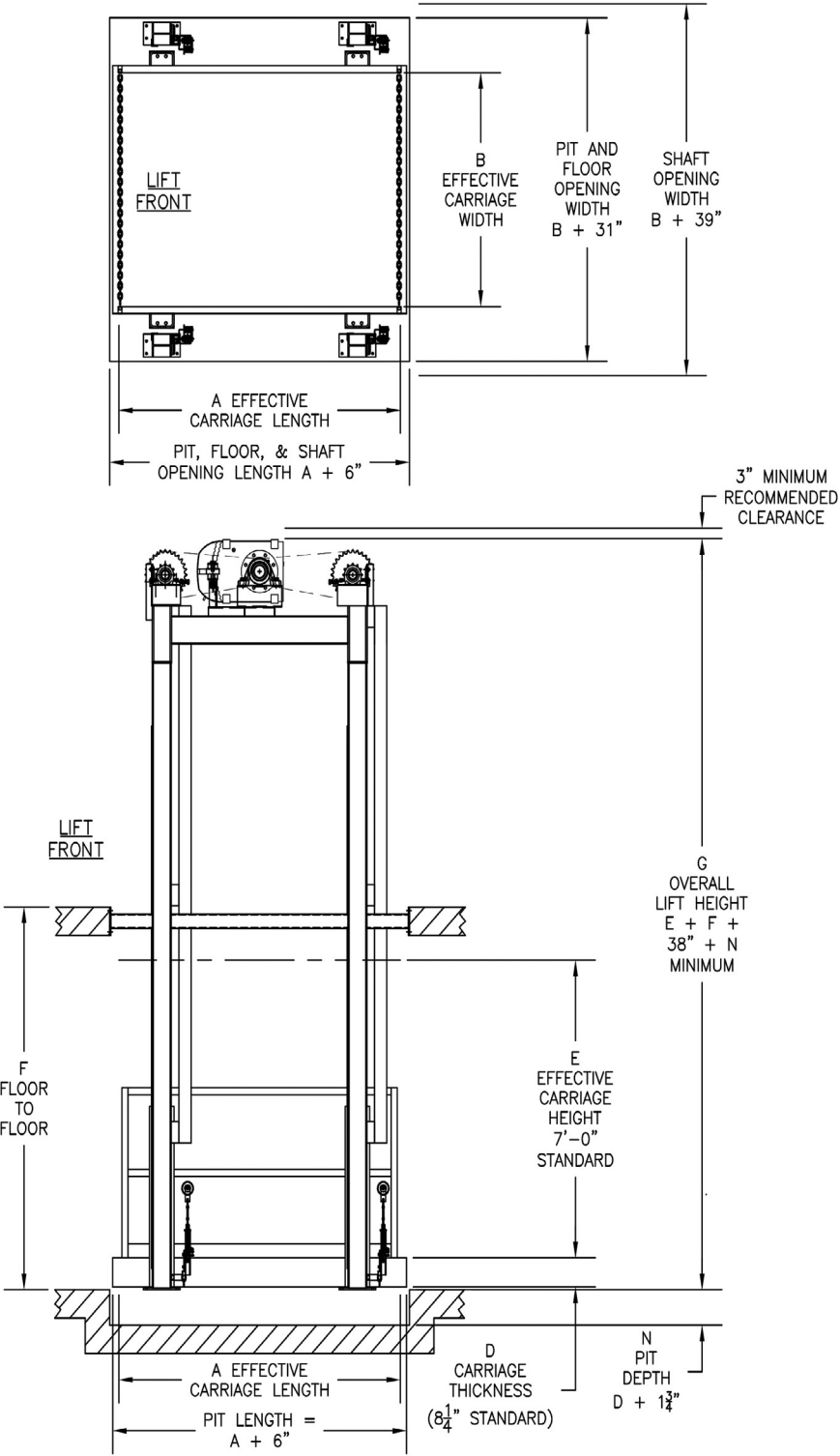
### Colors, Sizes

The PFlow F Series is custom engineered to application and height requirements.

### Benefits

- Easily adapts to a wide variety of uses
- Designed for continuous operation
- DeckLock Safety System secures critical upper levels
- Interlocked access prevent gates from opening between levels, protecting workers and materials
- Electrical components comply with NEC requirements
- Conforms to ANSI/ASME B20.1

PFlow Industries, Inc.





PFlow Industries, Inc.

**Table 1 – Physical Properties**

Maximum platform size	Unrestricted
Maximum capacity	50,000 lbs
Carriage size	As required
Maximum vertical rise	Unrestricted
Levels	Unrestricted
Travel speed	25–30 fpm (special order to 400 fpm)
Power requirement	230V/460V, 3-phase
Control voltage	110V
Brake motor	2 HP to 50 HP

**Limitations**

PFlow F Series is designed for the movement of materials only and should not be used as an elevator. Do not exceed rated capacity.

**Accessories, Options**

- DeckLock Safety System
- Expanded metal side guards
- Enclosures
- Sheet metal side guards
- Explosion proof

**Applicable Standards****American National Standards Institute (ANSI)**

ANSI B20.1 Safety Code for Conveyors, Cableways, and Related Equipment

**National Electrical Manufacturer's Association (NEMA)**

NEMA 12 Enclosures

**National Electrical Code® (NEC)**

NFPA 70 National Electrical Code

**Physical Properties**

See Table 1.

**5. Installation****Preparatory Work**

Perform all necessary site work, such as pit, floor opening, adequate bracing locations and shaftway openings. Ensure the site or building area has sufficient clearance to move the equipment into the storage and installation areas.

Transport products in manufacturer's original, unopened,

undamaged containers with identification labels intact. A fork truck with a minimum 2000 lb capacity is required. Inspect upon delivery.

**Weather/Ambient Conditions**

The PFlow F Series accommodates most weather conditions. Materials can be customized for climate need. Epoxy coating and galvanizing is available.

**Methods**

Comply with the manufacturer's F Series Installation Manual.

**Building Codes**

Ensure installation complies with the requirements of all applicable local, state and federal code jurisdictions.

**6. Availability and Cost**

PFlow Industries offers a full line of VRCs, including the F Series Mechanical Vertical Lift, throughout the U.S. and internationally. Contact PFlow Industries for pricing information and availability in specific areas.

**7. Warranty**

Used and installed as directed, PFlow Industries warrants the F Series Mechanical Vertical Lift, beginning 30 days after shipment. PFlow components have a one-year warranty on parts and labor. Purchased components have a one-year parts warranty and a 90-day labor warranty.

**8. Maintenance**

To ensure system safety, the PFlow F Series Mechanical Vertical Lift requires consistent minimal and basic attention. Standard preventative maintenance is within the capabilities of a plant maintenance person. See the PFlow F Series Maintenance and Owner's Manual for maintenance schedule details.

**9. Technical Services**

Technical assistance, including detailed information, product literature, test results, project lists, assistance in preparing project specification or installation supervision is offered by the manufacturer. For questions about specifications, code regulations, product usage or product installation, contact PFlow Industries, Inc.

**10. Filing Systems**

- CMD
- Additional product information is available from the manufacturer upon request ↗