

ALBA TURNTABLE TOP

Model No. TT-P

Pneumatic Turntable Base for 90° Rotation

TURNTABLE: 1/2" thick large diameter turntable plate mounted to heavy duty welded structural steel base. Flange bearing at center pivot point and four (4) heavy duty steel casters to support the turntable plate.

TURNTABLE OPERATION: Pneumatic cylinder for 90° rotation
Urethane bumpers at 0° and 90° stop locations
24 vdc double solenoid valve included

CAPACITY: 4000 Lbs. maximum centered load

ROTATION SPEED: 90° in 8 seconds

PAINT: Alba blue

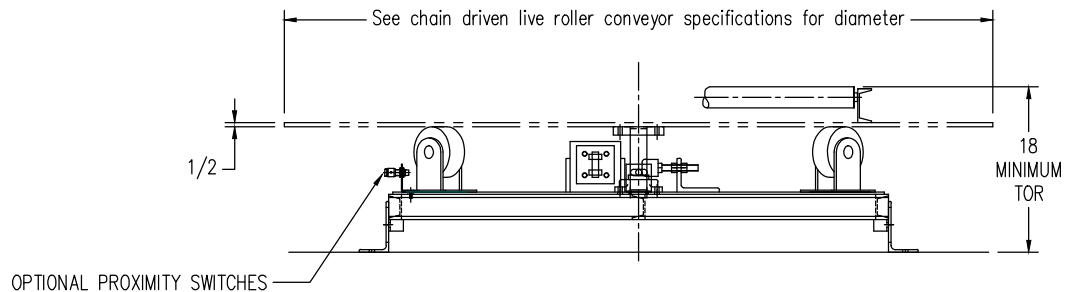
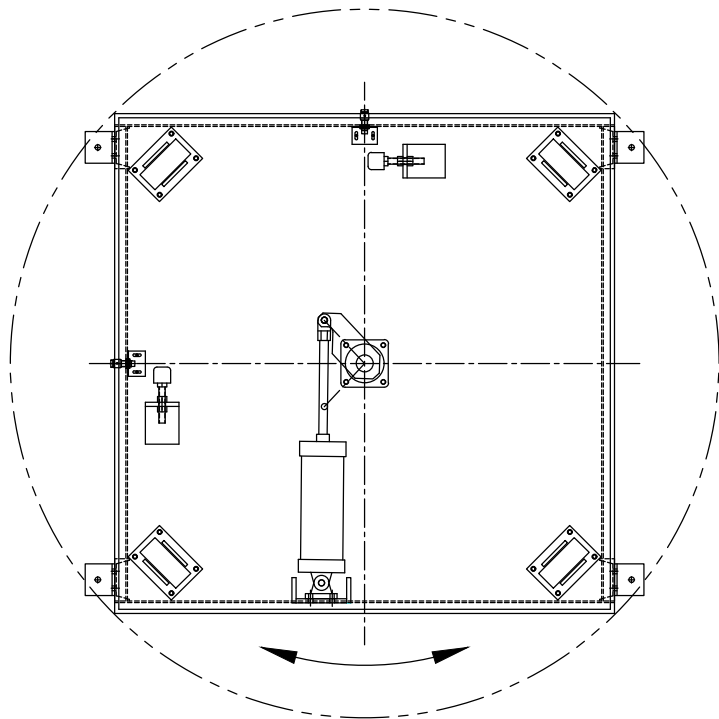
OPTIONS: -Proximity switches to sense 0° and 90° rotation
-Filter/regulator w/ gauge
-Powered Roller Tops

WHEN ORDERING SPECIFY:

- MODEL#
- OPTIONS

- Proximity switches - specify quantity
- Powered roller top - specify Model #

Note: Table diameter will be determined by roller spacing and effective width



ALBA TURNTABLE CONVEYOR

Available Turntable Options:

- Turntable top diameters
- Conveyor widths
- Rollers
 - Galvanized tubing, zinc plated and stainless steel
 - Heavy duty and ABEC-1 roller bearings
- Drives
 - Motors
 - VFD rated motors
 - Voltages
 - Different brands and types of motors are available
 - Reducers
 - Different brands and types are available
- Pre-mounted devices
 - Operating voltages - 110 VAC (24 VDC standard)
 - Proximity Switches and cables
 - Filter/regulator w/ gauge
 - Photo-eyes and cables
 - Junction Boxes w/ drive motor and devices pre-wired
 - Slip ring assemblies to allow for continuous rotation of turntable top
- Paint and Finishes
 - Special paint colors
 - Epoxy paint and Steel-It epoxy paint
 - Hot dipped galvanized frames