

ALBA TURNTABLE TOP

Model No. TT-ESR

Electric Turntable Base for 90°, 180° and Continuous Rotation

Turntable: 3/4" thick large diameter turntable plate mounted to heavy duty welded structural steel base. Large diameter ring bearing with external gear

ROTATION SPEED: 90° in approximately 7 seconds

TURNTABLE DRIVE: 1 hp inverter duty gearmotor with brake with flange mounted gear reducer and pinion gear 230/460/3/60 motor voltage – 230/460/1/60 brake coil voltage

PAINT: Alba blue

OPTIONS: –Proximity switches for fixed rotation stops
–Powered Roller Tops
–Slip ring unit for wiring conveyor top drive (Required for continuous rotation units)

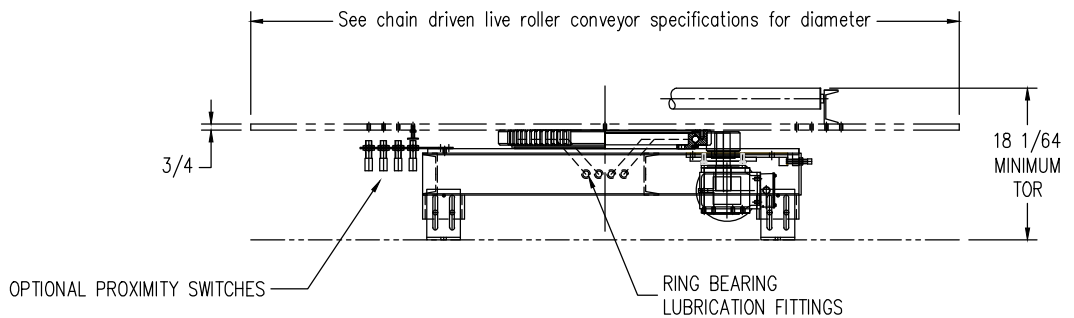
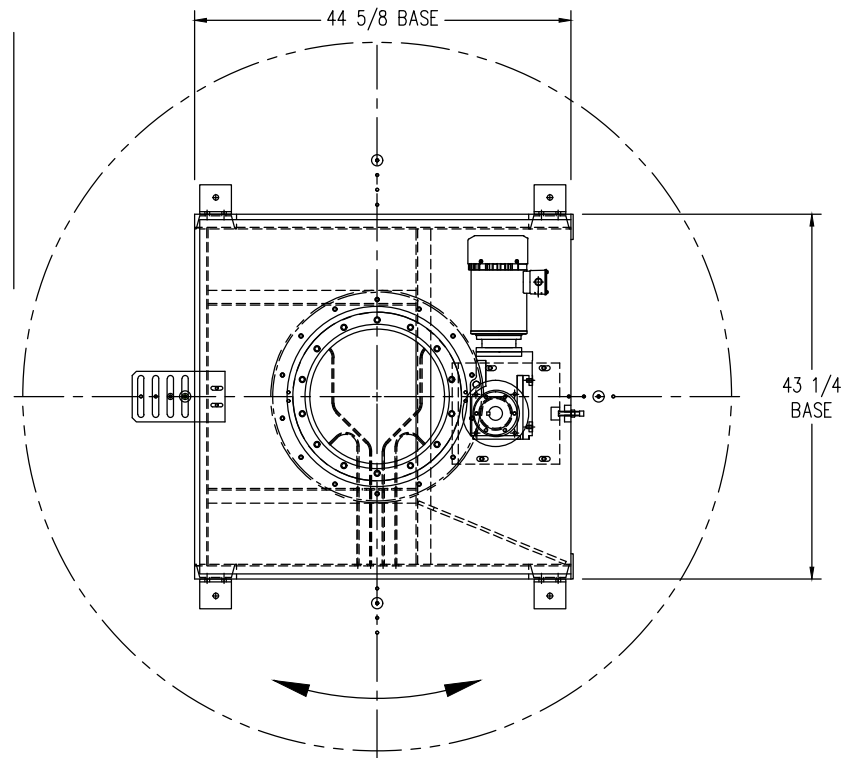
CAPACITY: 4000 Lbs. maximum centered load

WHEN ORDERING SPECIFY:

- MODEL#
- OPTIONS

- Proximity switches - specify quantity
- Powered roller top - specify Model #

Note: Table diameter will be determined by roller spacing and effective width



ALBA TURNTABLE CONVEYOR

Available Turntable Options:

- Turntable top diameters
- Conveyor widths
- Rollers
 - Galvanized tubing, zinc plated and stainless steel
 - Heavy duty and ABEC-1 roller bearings
- Drives
 - Motors
 - VFD rated motors
 - Voltages
 - Different brands and types of motors are available
 - Reducers
 - Different brands and types are available
- Pre-mounted devices
 - Operating voltages - 110 VAC (24 VDC standard)
 - Proximity Switches and cables
 - Filter/regulator w/ gauge
 - Photo-eyes and cables
 - Junction Boxes w/ drive motor and devices pre-wired
 - Slip ring assemblies to allow for continuous rotation of turntable top
- Paint and Finishes
 - Special paint colors
 - Epoxy paint and Steel-It epoxy paint
 - Hot dipped galvanized frames