

# ALBA TURNTABLE TOP

## Model No. TT251140-2.75-DBS

### Chain Driven Live Roller Conveyor Turntable Top - 2.75" Roller Centers Driven Both Sides, RC-40 Roll to Roll Chains

**LENGTH:** 2-1/2" diameter x 11 gauge wall, 11/16" hex axles, spring retained, two #40A21 sprockets, grease packed ball bearings

**SETTING:** Rollers are set 7/8" low both sides

**PAIN:** Alba blue with safety yellow chain guards

**FRAME:** 5 @ 6.7# channel - both sides

**ROLLERS:** C-frame motor and gear reducer 230/460/3/60, RC-40 drive chain

**ELEVATION:** 18" min. tor with pneumatic base and 17" tor with electric base

**ROLLER CAPACITY:** Bed rollers - 850 Lbs. each  
Drive rollers - 2,100 Lbs. each

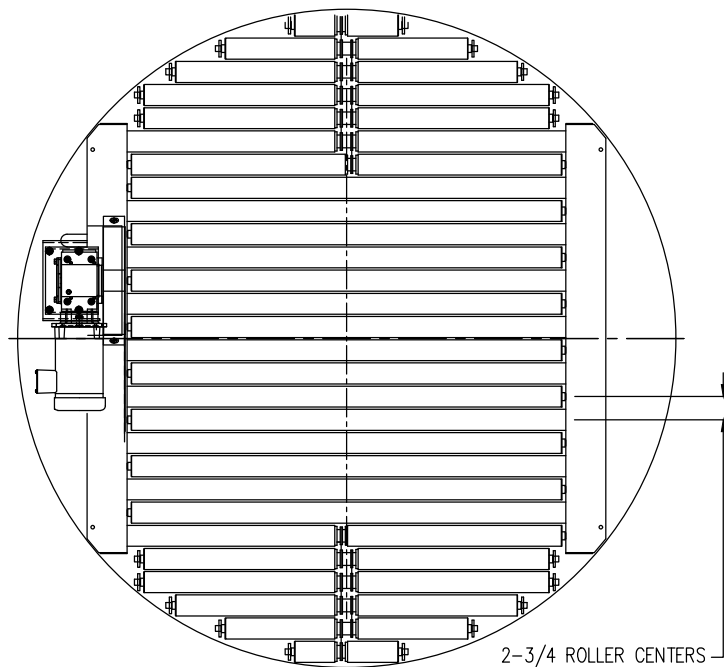
**SPEEDS:** 30, 45 or 60 FPM fixed

**OPTION:** Transition roller stands

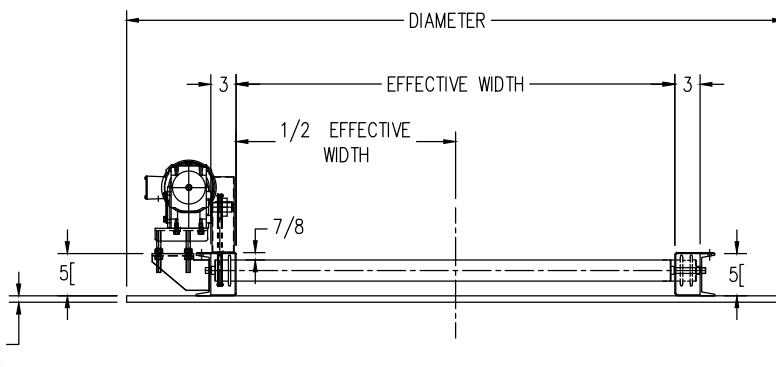
#### WHEN ORDERING SPECIFY:

- MODEL#
- EFFECTIVE WIDTH
- HORSEPOWER
- SPEED
- BASE STYLE (ELECTRIC OR PNEUMATIC)
- TOP OF ROLLER ELEVATION
- OPTIONS

Please consult the factory with your application for proper drive sizing



AVAILABLE EFFECTIVE WIDTHS	
EFFECTIVE WIDTH	TABLE DIAMETER
44"	72"
48"	75"
52"	78"
54"	78"
60"	86"



# ALBA TURNTABLE CONVEYOR

---

## Available Turntable Options:

- Turntable top diameters
- Conveyor widths
- Rollers
  - Galvanized tubing, zinc plated and stainless steel
  - Heavy duty and ABEC-1 roller bearings
- Drives
  - Motors
    - VFD rated motors
    - Voltages
    - Different brands and types of motors are available
  - Reducers
    - Different brands and types are available
- Pre-mounted devices
  - Operating voltages - 110 VAC (24 VDC standard)
  - Proximity Switches and cables
  - Filter/regulator w/ gauge
  - Photo-eyes and cables
  - Junction Boxes w/ drive motor and devices pre-wired
  - Slip ring assemblies to allow for continuous rotation of turntable top
- Paint and Finishes
  - Special paint colors
  - Epoxy paint and Steel-It epoxy paint
  - Hot dipped galvanized frames