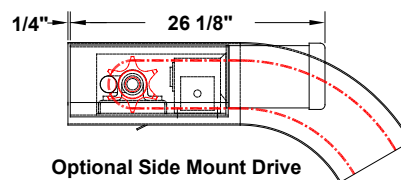
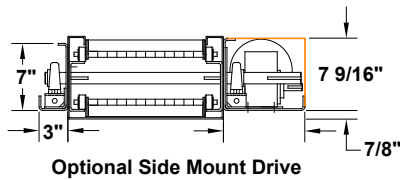
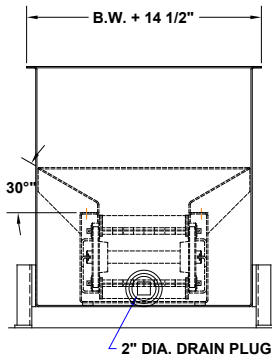
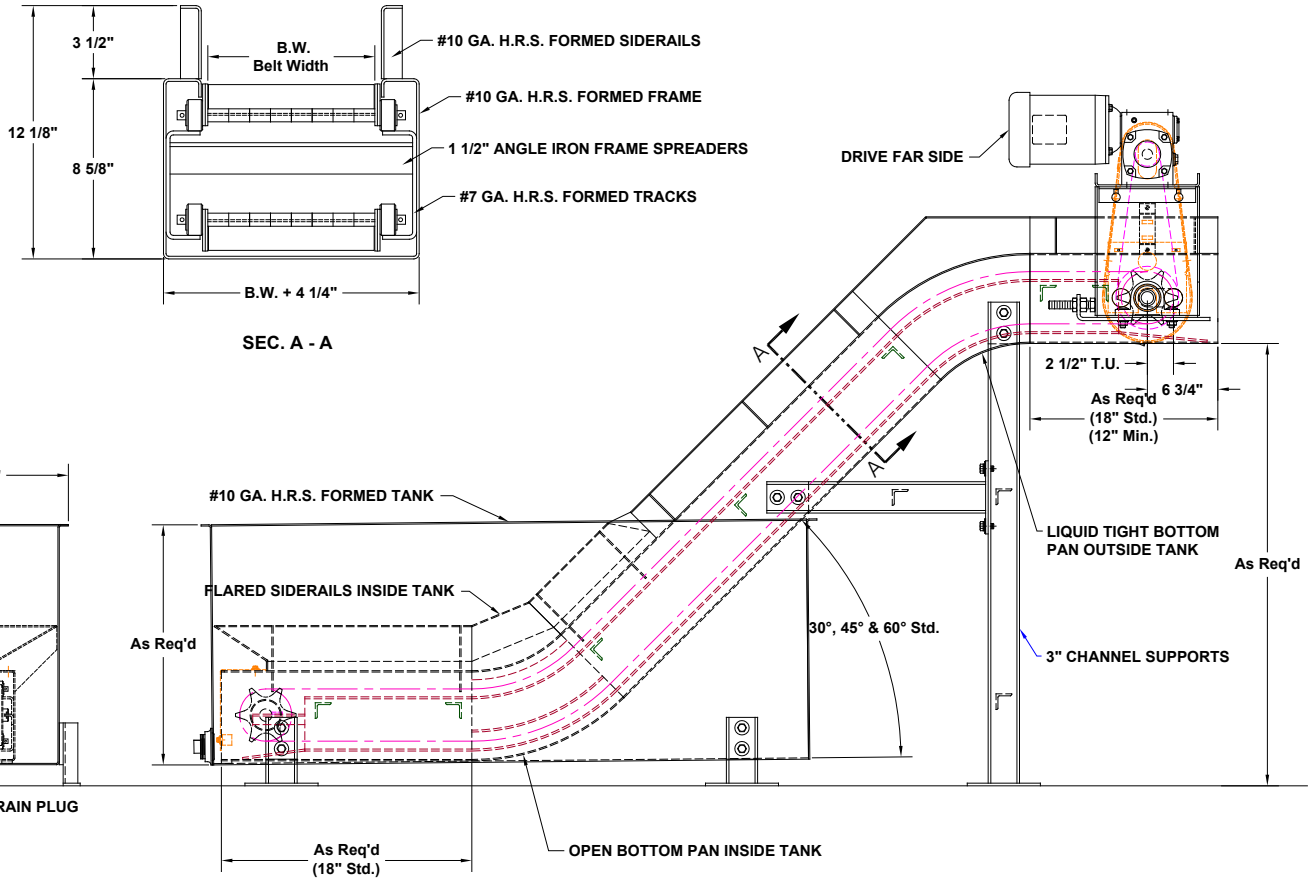
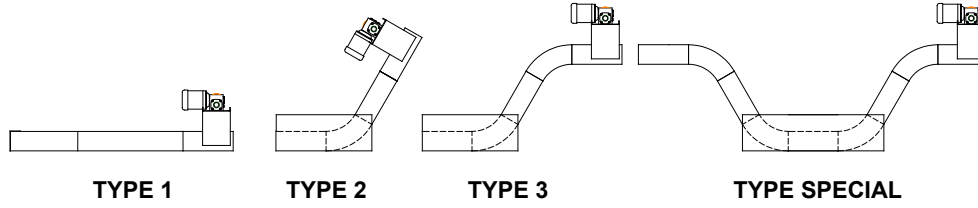


Model Quench Conveyor

QUENCH CONVEYOR PROFILES AVAILABLE



Bulletin 0113_PPROGH

735 Industrial Loop Road • New London, WI 54961-9612
 920-982-6600 • Fax 920-982-7750 • Toll Free 800-558-3616
 Website: www.titanconveyors.com • Email: sales@titanconveyors.com



Quench Conveyor



Titan's Quench Conveyor is designed to quench or cool heavy-duty parts, cool die cast parts and scrap. It's built with a liquid tight horizontal tank. It can be supplied with wire mesh belt, plastic or steel belt. Choose from a complete line of liquid-tight conveyors for your die cast, heat transfer, parts cooling or coating operation.

Quench conveyors are excellent for applications where air cooling is not sufficient or practical.

Features • Can be installed above the floor or in a pit

Options

- Liquid-tight tanks available in a separate tank unit, integral or part of a conveyor
- Conveyors available in steel belt
- Coolant tanks, pumps, drain plugs



MODEL QUENCH CONVEYOR		
	Standard	Options
Belt Width	4", 6", 8", 10", 12", 14", 16", 18", 24"	30", 36", 42"
Belt	2 1/2" pitch Plain hinged steel with 12 ga. apron	4" & 6" Pitch available, perforated, pimpled, perforated & pimpled, impact plates - wire mesh & plastic belts available
Curves	30°, 45°, 60°	Special Curves
Frame	8-5/8" deep formed 10 ga.	
Drive	1/2 H.P. 230/460/3/60	3/4, 1, 1-1/2, 2 HP - severe duty, brake motor
Speed	10 F.P.M.	Specify
Chain Pull	1500# without sidebars	3000# with sidebars
OPTIONS		
Drive location, motors, controls, welded barrels, paint color, customized infeed siderails, casters, coolant tanks, pumps, train plugs, zero speed switches, top covers, impact rails on infeed frame, and infeed hoppers		
Many other options available, consult factory representative		

NOTE: Specifications subject to change without notice