

SYSTEMS ACCESSORIES

REVERSING O-RING TRANSFER (BR TYPE)

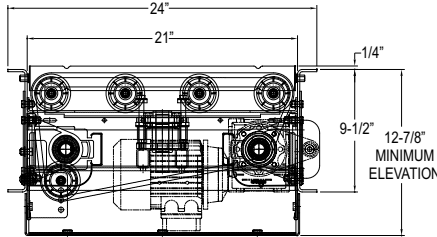
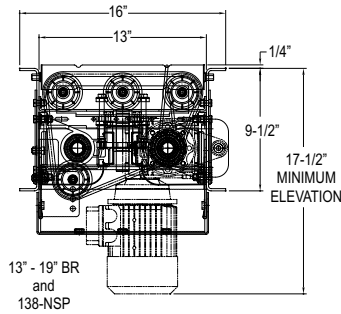
Reversing O-Ring Transfers are used to move products at right angles to adjacent or parallel conveyor lines. An air bag lifts the transfer mechanism while powered O-Rings transfer the product. Linear bearings are used to guide transfer as it is raised and lowered. A gearmotor is utilized to operate the reversing mechanism to reverse transfer flow. Can be used with Models 138 and 190 NSP/NSPEZ line shaft conveyors.



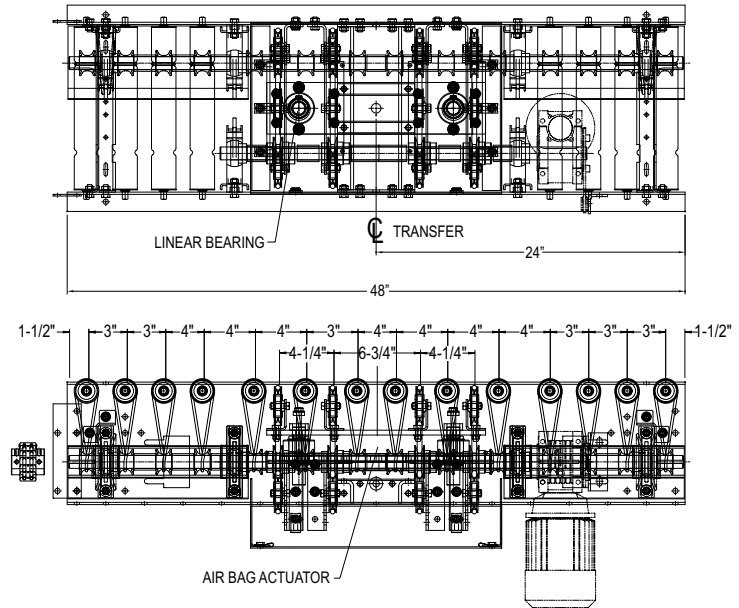
Note: No accumulation in transfer section.

190-NSP	
OAW	BR
16"	13"
18"	15"
20"	17"
22"	19"
24"	21"
26"	23"
28"	25"
30"	27"
34"	31"
36"	33"
40"	37"
42"	39"

138-NSP	
OAW	BR
15"	13"
18"	16"
24"	22"



21\"-39\" BR



• STANDARD SPECIFICATIONS

CAPACITY—75 lbs. maximum unit load.

TRANSFER O-RING— $\frac{3}{8}$ in. dia. polyurethane o-ring.

TRANSFER SPEED—Not to exceed speed of conveyor.

DRIVE—Transfer is driven from 230/460/3/60, $\frac{1}{2}$ HP shaft-mounted gearmotor.

MOUNTING—Mounted in 48 in. long section of 138-NSP, 190-NSP, 138-NSPEZ, 190-NSPEZ with 3 and 4 in. roller centers.

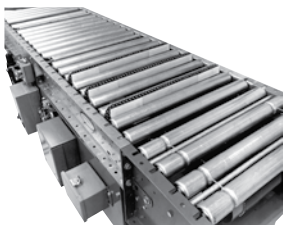
ELECTRICAL CONTROLS—Not furnished as standard equipment.

PNEUMATICS—Air bag (controlled by single solenoid valve) lifts transfer. Requires maintained electrical signal of 115V-1 Ph. 60 Hz. from photo cell, limit switch, etc. (not supplied). Transfer will stay in raised position until signal is broken. Current consumption is .09 amps holding.

AIR REQUIREMENTS—Minimum pressure 60 P.S.I., maximum 100 P.S.I. with .038 cu.ft. of free air per cycle at 60 P.S.I. **NOTE:** To eliminate contaminants in air supply line, a filter-regulator should be installed prior to air valve (not supplied as standard).

CHAIN TRANSFER (CT-200)

Chain Transfers are used to move products at right angles to adjacent or parallel conveyor lines. One air cylinder lifts the transfer mechanism while powered chains transfer the product. Chains run on UHMW polyethylene wearstrips to reduce friction. Complete unit mounts in Models ABEZ, 190-ACZ or 190-LR.



STRAND CODES	STRAND QTY	STRAND CENTERS	A	B	C	D
A	2	6	06"	N/A	N/A	18-1/2"
B	2	9	09"	N/A	N/A	21-1/2"
C	2	12	12"	N/A	N/A	24-1/2"
D	3	6, 6	12"	6"	N/A	24-1/2"
E	2	15	15"	N/A	N/A	27-1/2"
F	2	18	18"	N/A	N/A	30-1/2"
G	3	9, 9	18"	9"	N/A	30-1/2"
H	4	6, 6, 6	18"	6"	6"	30-1/2"
J	2	21	21"	N/A	N/A	33-1/2"
K	4	6, 9, 6	21"	6"	9"	33-1/2"
L	2	24	24"	N/A	N/A	36-1/2"
M	3	12, 12	24"	12"	N/A	36-1/2"
N	4	6, 12, 6	24"	6"	12"	36-1/2"
P	4	9, 6, 9	24"	9"	6"	36-1/2"

NOTE: No brakes in ABEZ zone where CT-200 is mounted.

