

# WC

## Power Curve Conveyor

The Model WC with wire belt can carry hot or cold parts from ovens or freezers. Can be used in drying operations.

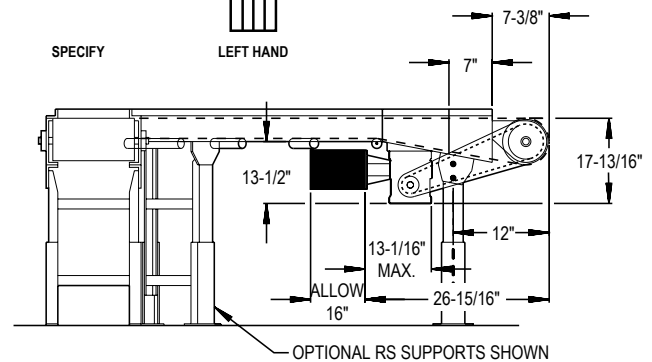
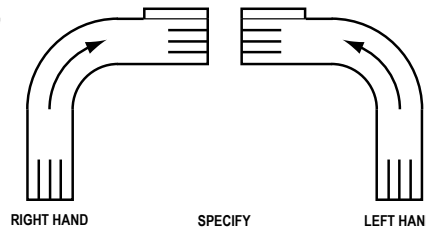
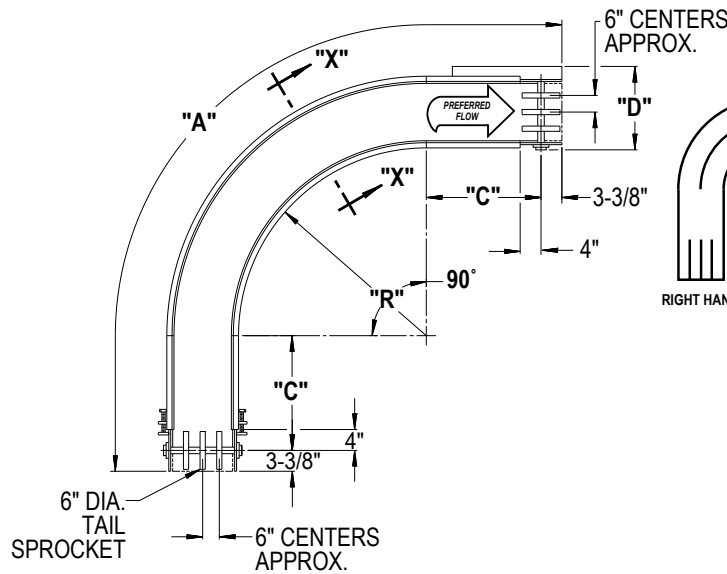
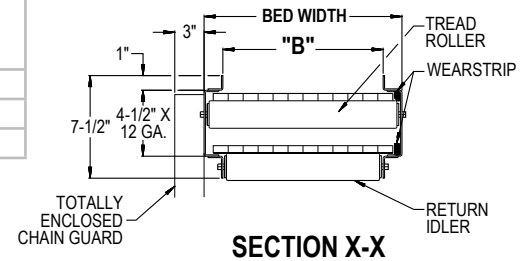
- 3 Belt Widths
- Wire Mesh Belt
- Adjustable RS-Type Floor Supports Available



Conveyor shown with optional floor supports

Belt Width	Bed Width	Outside Length "A"	"B"	"C"	"D"	"R"	WEIGHTS (Lbs.)
12"	13 1/4"	10'-7"	11"	22"	18 5/8"	36"	460
18"	19 1/4"	14'-7"	17"	27"	22 1/4"	54"	640
24"	25 1/4"	19'-3"	23"	36"	28 1/4"	72"	750

All weights in catalog are conveyor weights only. Accessories, crating, etc., are not included.



### • STANDARD SPECIFICATIONS

**END DRIVE**—Located on discharge end of conveyor, chain guard on left hand side.

**BELT**—1 in. x 1 in. Galvanized flat, high carbon steel wire mesh belt. Maximum product temperature 750°F.

**BED**—Roller bed with 1.9 in. dia. roller x 16 ga. galvanized tube mounted in 4 1/2 in. x 12 ga. powder painted formed steel channel frame.

**DRIVE SPROCKETS**—6 in. pitch dia. multiple cast iron sprockets with 1 3/8 in. dia. shaft 6 in. centers.

**TAIL SPROCKETS**—6 in. pitch dia. multiple cast iron sprockets with 1 3/8 in. dia. shaft 6 in. centers.

**RETURN IDLER**—Adjustable 1.9 in. dia. pre-lubricated ball bearings.

**TAKE-UP**—Take-ups at tail pulley. Provides 4 in. of belt take-up.

### • OPTIONAL EQUIPMENT

**FLOOR SUPPORTS**—RS Type floor supports are available with a wide range of adjustment. Specify top of belt or roller elevation. One support required at every bed joint and ends of conveyor. Holes in feet for lagging to floor. Knee braces recommended above RS-6 support.

**BELT**—Other widths than standard can be supplied.

**BELT SPEED**—Other constant and variable speeds. V-belt drive supplied on speeds under 15 FPM.  
**NOTE:** Capacity affected with speed change.

**V-BELT DRIVE**—V-belt supplied between motor and reducer.

**O-RING DRIVE CHAIN**—With sealed in lubricant (Recommended for applications that do not permit regular lubrication).

**BEARINGS**—Sealed, pre-lubricated, self-aligning cast iron ball bearings on drive and tail shafts. Pre-lubricated ball bearings in tread rollers.

**SPEED REDUCTION**—Sealed worm gear C-Face speed reducer. No. 50 roller chain to drive sprocket.

**MOTOR**—1/2 HP—208/230/460/575V—3 Ph. 60 Hz. Totally Enclosed C-Face.

**BELT SPEED**—Constant 65 FPM.

**CAPACITY**—300 lbs. total distributed live load.

**FLOOR SUPPORTS**—Now supplied as optional equipment.

**POLY-TIER SUPPORTS**—36 in. to 120 in. support heights in 6 in. increments. Knee braces supplied.

**CEILING HANGARS**—5/8 in. dia. x 8 ft. long unplated rods fully threaded. Other lengths and galvanized rods available.

**MOTORS**—Energy efficient, single phase, brakemotor, other characteristics. 1 HP maximum.

**ELECTRICAL CONTROLS**—Non-reversing magnetic starters and push-button stations. AC variable frequency drive.