

26-CRR

Chain Driven Live Roller Conveyor (Roll-to-Roll Type)

The heavy design of the 26-CRR allows it to be used for conveying higher load capacities such as loaded pallets and drums. Chain driven rollers make it ideal for conveying oily parts in bottling and steel industries.

- 15 Bed Widths
- Center Drive
- Reversible
- Chain Driven Rollers
- Adjustable HSN-Type Floor Supports Available



Conveyor shown with optional floor supports

4 in., 5 in., 6 in., and 7 1/2 in., Roller Centers.

| Conveying Surface | | 15 3/4" | 17 3/4" | 19 3/4" | 21 3/4" | 23 3/4" | 27 3/4" | 29 3/4" | 33 3/4" | 35 3/4" | 39 3/4" | 43 3/4" | 47 3/4" | 51 3/4" | 57 3/4" | 63 3/4" |
|--------------------------------|----------|---------|---------|---------|---------|---------|---------|---------|---------|---------|---------|---------|---------|---------|---------|---------|
| Between Rail Width | | 19" | 21" | 23" | 25" | 27" | 31" | 33" | 37" | 39" | 43" | 47" | 51" | 55" | 61" | 67" |
| Overall Frame Width | | 22 3/4" | 24 1/4" | 26 1/4" | 28 1/4" | 30 1/4" | 34 1/4" | 36 1/4" | 40 1/4" | 42 1/4" | 46 1/4" | 50 1/4" | 54 1/4" | 58 1/4" | 64 1/4" | 70 1/4" |
| *4" Centers 10' Length-O.A. | No. 40 | 808 | 845 | 882 | 919 | 956 | 1030 | 1067 | 1141 | 1178 | 1252 | 1326 | 1400 | 1474 | 1585 | 1696 |
| | Per Foot | Chain | 73 | 77 | 81 | 85 | 89 | 97 | 101 | 109 | 113 | 121 | 129 | 137 | 145 | 157 |
| 5" Centers 10' Length-O.A. | No. 50 | 707 | 742 | 777 | 812 | 847 | 917 | 952 | 1022 | 1057 | 1127 | 1197 | 1267 | 1337 | 1442 | 1547 |
| | Per Foot | Chain | 65 | 69 | 73 | 77 | 81 | 89 | 93 | 101 | 105 | 113 | 121 | 129 | 137 | 149 |
| 6" Centers 10' Length-O.A. | No. 60 | 639 | 673 | 707 | 741 | 775 | 843 | 877 | 945 | 979 | 1047 | 1115 | 1183 | 1251 | 1353 | 1455 |
| | Per Foot | Chain | 59 | 62 | 65 | 68 | 71 | 77 | 80 | 86 | 89 | 95 | 101 | 107 | 113 | 122 |
| 7 1/2" Centers 10' Length-O.A. | No. 60 | 572 | 605 | 638 | 671 | 704 | 770 | 803 | 869 | 902 | 968 | 1034 | 1100 | 1166 | 1265 | 1364 |
| | Per Foot | Chain | 55 | 59 | 61 | 64 | 67 | 73 | 76 | 82 | 85 | 91 | 97 | 103 | 109 | 118 |

*#40 chain reduces total conveyor capacity. Consult factory.

3 in. Roller Centers.

| Conveying Surface | | 15 3/4" | 17 3/4" | 19 3/4" | 21 3/4" | 23 3/4" | 27 3/4" | 29 3/4" | 33 3/4" | 35 3/4" | 39 3/4" | 43 3/4" | 47 3/4" | 51 3/4" | 57 3/4" | 63 3/4" |
|----------------------------|----------|---------|---------|---------|---------|---------|---------|---------|---------|---------|---------|---------|---------|---------|---------|---------|
| Between Rail Width | | 22 1/4" | 24 1/4" | 26 1/4" | 28 1/4" | 30 1/4" | 34 1/4" | 36 1/4" | 40 1/4" | 42 1/4" | 46 1/4" | 50 1/4" | 54 1/4" | 58 1/4" | 64 1/4" | 70 1/4" |
| Overall Frame Width | | 25 1/2" | 27 1/2" | 29 1/2" | 31 1/2" | 33 1/2" | 37 1/2" | 39 1/2" | 43 1/2" | 45 1/2" | 49 1/2" | 53 1/2" | 57 1/2" | 61 1/2" | 67 1/2" | 73 1/2" |
| 3" Centers 10' Length-O.A. | No. 60 | 976 | 1016 | 1056 | 1096 | 1136 | 1216 | 1256 | 1336 | 1376 | 1456 | 1536 | 1616 | 1696 | 1816 | 1936 |
| | Per Foot | Chain | 87 | 90 | 93 | 96 | 99 | 103 | 108 | 114 | 117 | 123 | 129 | 135 | 141 | 150 |

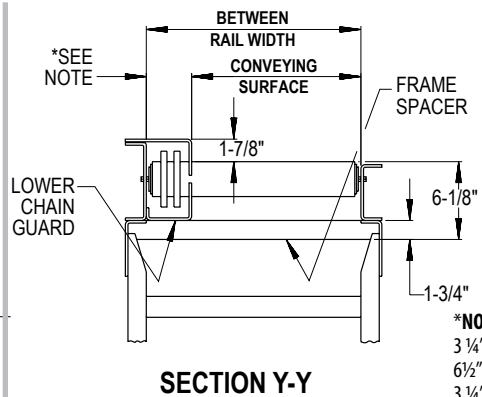
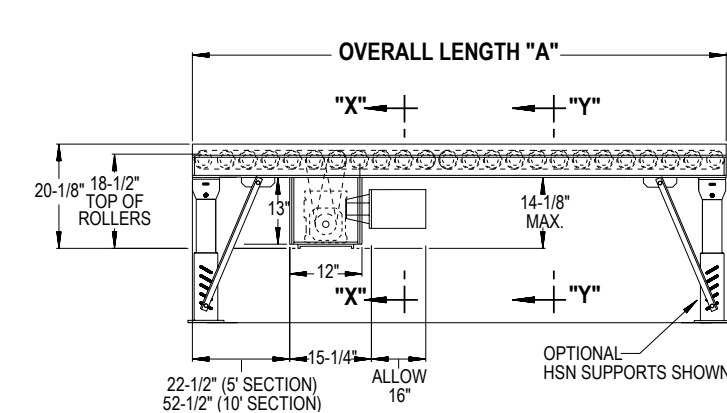
3 3/4 in. Roller Centers.

| Conveying Surface | | 15 3/4" | 17 3/4" | 19 3/4" | 21 3/4" | 23 3/4" | 27 3/4" | 29 3/4" | 33 3/4" | 35 3/4" | 39 3/4" | 43 3/4" | 47 3/4" | 51 3/4" | 57 3/4" | 63 3/4" |
|--------------------------------|----------|---------|---------|---------|---------|---------|---------|---------|---------|---------|---------|---------|---------|---------|---------|---------|
| Between Rail Width | | 22" | 24" | 26" | 28" | 30" | 34" | 36" | 40" | 42" | 46" | 50" | 54" | 58" | 64" | 70" |
| Overall Frame Width | | 25 1/4" | 27 1/4" | 29 1/4" | 31 1/4" | 33 1/4" | 37 1/4" | 39 1/4" | 43 1/4" | 45 1/4" | 49 1/4" | 53 1/4" | 57 1/4" | 61 1/4" | 67 1/4" | 73 1/4" |
| 3 3/4" Centers 10' Length-O.A. | No. 60 | 839 | 879 | 919 | 959 | 999 | 1079 | 1119 | 1199 | 1239 | 1319 | 1399 | 1479 | 1559 | 1629 | 1799 |
| | Per Foot | Chain | 78 | 81 | 84 | 87 | 90 | 96 | 99 | 105 | 108 | 114 | 120 | 126 | 132 | 141 |

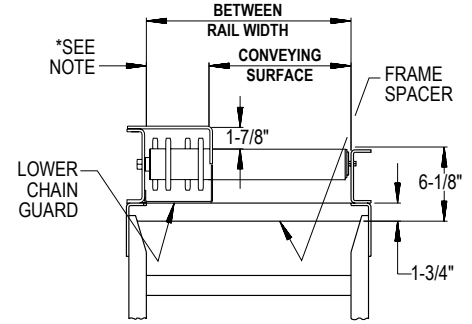
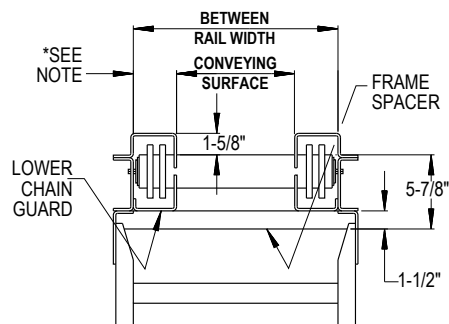
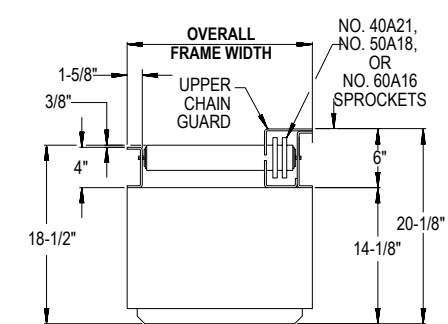
All weights in catalog are conveyor weights only. Accessories, crating, etc. are not included

Note: Add 1 3/8" to OAL for Chain Guard End Caps on 4" centers only.

Note: Add 3" to OAL for Chain Guard End Caps on 3" roller centers only.



***NOTE:**
3 1/4" FOR 4", 5", 6", and 7 1/2" CENTERS.
6 1/2" FOR 3 3/4" CENTERS ONLY.
3 1/4" ON BOTH SIDES FOR 3" CENTERS.



• STANDARD SPECIFICATIONS

26-CRR

BED—Roller bed with 2 5/8 in. dia. x 7 ga. unplated tread rollers spaced every 4 in. with No. 40 roller chain; 5 in. with No. 50 roller chain. No. 60 roller chain used on 3 in., 3 3/4 in., 6 in., and 7 1/2 in. roller centers only. Tread rollers mounted in 4 in. x 4 ga. powder painted formed steel channel on side opposite chain guard and 6 in. x 4 ga. powder painted formed steel channel on chain guard side. **NOTE:** 3 in. roller center tread rollers mounted in 4 in. channel each side.

CENTER DRIVE—Can be placed in any section of conveyor length, specify. Chain guard located on left hand side.

DRIVE CHAIN—No. 40, 50 or 60 roller chain.

CHAIN GUARD—Formed steel, upper and lower chain guard mounted to top and bottom of channel frame to totally enclose drive chains.

BEARINGS—Sealed, pre-lubricated ball bearings.

SPEED REDUCTION—Sealed worm gear C-Face speed reducer.

MOTOR—1 HP—208/230/460/575V—3 Ph. 60 Hz. Totally Enclosed C-Face.

CONVEYING SPEED—Constant 30 FPM.

CAPACITY—Maximum load per linear foot of conveyor 300 lbs. with supports on 10 ft. centers, 1000 lbs. with supports on 5 ft. centers. Contact factory for capacity of No. 40 chain, 4 in. roller centers. NOT TO EXCEED CAPACITY IN CHART.

FLOOR SUPPORTS—Now supplied as optional equipment.

| LOAD CAPACITY CHART @ 30 FPM | | |
|------------------------------|-----------|------------|
| TOTAL LOAD (Lbs.) | | |
| HP | UP TO 50' | UP TO 100' |
| 1 | 9000 | 6000 |
| 2 | 22000 | 18000 |

NOTE: Capacities are calculated on 5" Roller Centers with #50 Chain.

• OPTIONAL EQUIPMENT

FLOOR SUPPORTS—HSN Type floor supports are available with a wide range of adjustment. Specify top or roller elevation. One support required at every bed joint and ends of conveyor. Holes in feet for lagging to floor. Knee braces recommended above HSN-3 support.

CONVEYING SPEED—Other constant and variable speeds. V-belt supplied on speeds under 12 FPM (1 HP). **Note:** Capacity affected with speed change.

TOP SIDE MOUNTED DRIVE—Motor reducer unit mounted to side of conveyor with drive chain through top of chain guard. Specify clearances. Minimum elevation top of rollers 6 in.

V-BELT DRIVE—V-belt supplied between motor and reducer.

O-RING DRIVE CHAIN—With sealed in lubricant (Recommended for applications that do not permit regular lubrication).

FRAMES—4 in. X 5.4 lb. structural channel (welded).

GUARD RAILS—Fixed angle (2 in. high x 1/4 in. steel) guard bolts to top flange of channel opposite chain guard.

CHANNEL END STOP—6" x 8.2 lb. structural channel end stop.

ROLLERS SET LOW—Tread rollers mounted in 6 in. x 4 ga. formed steel channel frame to form 1 1/2 in. high guard rails. Also available in 5 in. x 6.7 lbs. structural channel frame (welded). Specify.

CHAIN CROSSOVER—Separate 3-roller section moves driving chain from one side of conveyor to other. Offset-style adds 12 in. to OAL of conveyor with No. 40 chain, 15 in. with No. 50 chain & 18 in. with No. 60 chain.

TRANSFERS—Chain transfers available. See Accessory section.

MOTORS—Energy efficient, single phase, brakemotor, other characteristics. 2 HP maximum.

ELECTRICAL CONTROLS—Non-reversing magnetic starter – push-button stations. AC variable frequency drive.