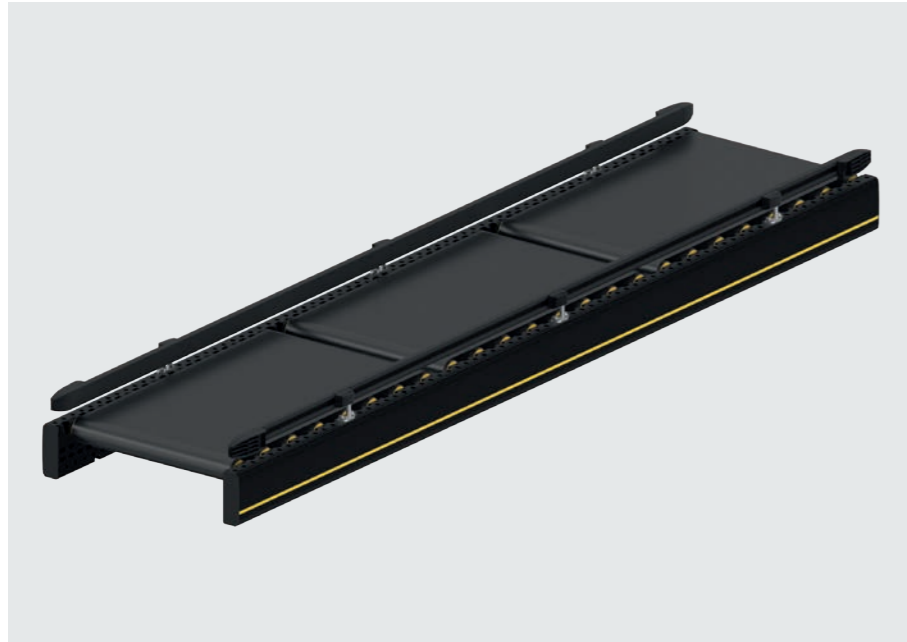


BM 8350

Interroll Belt Conveyor
Straight
24 V powered



Product Description

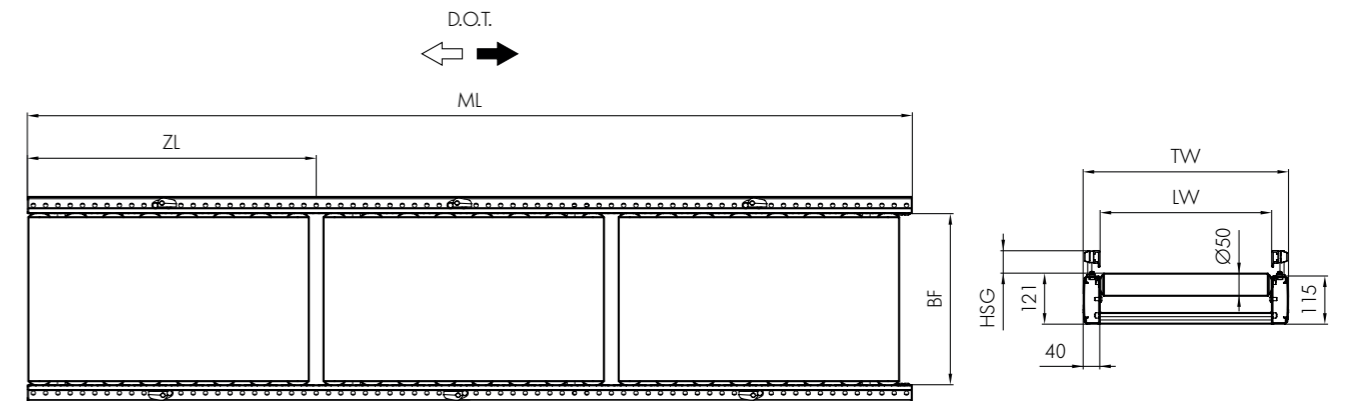
The Belt Conveyor Light is a belt conveyor that is divided into zones and operates with zero pressure accumulation; its drive is based on the 24 V RollerDrive. It is possible to transport and accumulate small products, as well as products not suitable for roller tracks. Not suitable for reversing operation.

Technical data

General technical data	Max. load capacity per zone*	50 kg
	Conveyor speed*	Max. 0.8 m/s
	Incline/decline	Max. 15°
	Ambient temperature	+5 to +40 °C
Drive	Rated voltage	24 V
	Motor type	Interroll RollerDrive EC310
	Diameter of drive roller	50 mm
	Control	MultiControl
Material	Conveyor belt	Polyester with PVC coating
	Slider bed	Rollers, Interroll Series 1700

* The combination of maximum values is not always possible.

Dimensions



BF	Between frames	420, 620, 840 mm (min. 360 mm, max. 840 mm) others on request
LW	Lane width	BF (+120/-90 mm per side with flexible side guide)
ML	Module length	ZL x number of zones, max. 4080 mm
ZL	Zone length	Number of rollers x P, max. 1980 mm
TW	Module width	BF + 80 mm
P	Roller pitch	90 mm under the belt, 60 mm between the zones
HSG	Height side guide	35 - 65 mm

Scope of supply

- Module is completely assembled and prewired
- Supply incl. 1 sensor per zone
- Please order support stands and end caps separately