

EZLogic® COMPONENTS

Hytrol has once again created the most advanced zero-pressure accumulation system in the world. While featuring the same EZLogic® familiarity, GEN3 incorporates new technologies for ease of installation, operation, and maintenance.

The components listed are used on the following conveyors: 138-NSPEZ, 190-NSPEZ, 190-NSPEZC, ABEZ, 190-PREZ, 190-PREZC, 25-LREZ, 199-CREZD, 25-CREZD, 36-CREZD, CCEZ, DCEZ-60, DCEZ-63, DCEZ-82, DCEZ-83, and PLEZD.

ZONE CONTROLLERS

Retro-Reflective Type Zone Controller
Zone controller including mounting base and unitized retro-reflective transducer.
032.501

Diffuse Type Zone Controller
Zone controller including mounting base and unitized diffuse transducer with adjustable sensitivity (through programming).
032.502
032.502

Enhanced Retro-Reflective Zone Controller
Same as standard, plus used for IOP communication, and addressable remote access.
032.505
032.505

Enhanced Diffuse Zone Controller
Same as standard, plus used for IOP communication, and addressable remote access.
032.506
032.506

Remote Zone Controller
Zone controller including mounting base. Connectorized for attaching any remote transducer.
032.504

Enhanced Remote Zone Controller
Enhanced zone controller including mounting base. Connectorized for attaching any remote transducer. Same as standard, plus used for IOP communication, and addressable remote access.
032.507



U.S. Patent Numbers 5,862,907 • 7,243,781 • 7,591,366 • Other Patents Pending.



TRANSDUCERS (SENSORS)

Remote Diffuse Transducer (Narrow Beam)
Has narrow beam for use with close roller centers. Attaches to any remote zone controller and allows transducer to be mounted separate from controller.
032.513



CORDSETS

Zone Controller Cordset (Zone to Zone Communication)
Available for the following zone lengths:

12"	032.551
18"	032.552
24"	032.553
30"	032.554
36"	032.555
48"	032.556
60"	032.557
72"	032.558

Zone Controller Screw-On Cordset (NEMA 4X Zone to Zone Communication for Wash Down Application)
Available for the following zone lengths:

12"	032.5515
18"	032.5525
24"	032.5535
30"	032.5545
36"	032.5555
48"	032.5565
60"	032.5575
72"	032.5585



EZLOGIC[®] COMPONENTS

NOTE: All GEN3 EZLogic[®] Components are List Price.

CORDSETS (continued)

Infeed Zone Terminator
Terminates zone to zone communication at infeed zone.
032.550

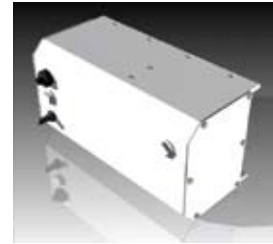


Mounting Base
Use to mount any Zone Controller.
032.517



IOP

IOP
Provides 27VDC, 100 watt power for EZLogic[®] accumulation system. Requires 120 VAC or 230 VAC single phase input. Operates up to 50 zones (25 zones each side of IOP).— contains slots for 4 input/output boards. Requires enhanced zone controllers to communicate with input/output boards.
032.582



IOP“T” Cable
Required to deliver power and IOP communication from IOP to zone controllers. Max. of 25 zones per each branch of T.
Standard Push-On032.559
NEMA 4X Screw-On032.5595



I/O Board
Plugs into slot in IOP to provide two input/output connections. Requires enhanced controller to receive signal.
032.583



CONFIGURATION/DIAGNOSTIC COMPONENTS

Push Button Programmer
Plugs into auxiliary port of any controller to configure certain features of controller. Required for customization of factory default settings.
032.535



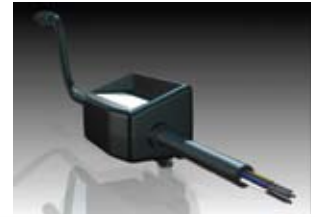
Programming Kit for PC and PC Adaptor
Used to connect PC USB port to auxiliary port of any controller. Includes Genesis[™] configuration software. Used to configure all features of controller. Required for customization of factory default settings.
K-01554



AUXILIARY COMPONENTS

Auxiliary I/O Module

Plugs into auxiliary port of any controller - used to provide photo eye output or to accept a voltage type input.
032.532



Auxiliary Input Cable

Attaches to any zone controller. Used for zone stop input, wakeup eye input, or slug input. Available in 3 and 10 ft. lengths.
3 ft. 032.563
10 ft..... 032.564



Zone Actuation Module "ZAM" (Alternate Drive)

Provides NPN, PNP, or dry contact output from zone controller.
032.531



Retro-Reflective Wake-up Eye

Plugs into auxiliary port of any controller to send wake-up signal.
032.591



Diffuse Wake-up Eye

Plugs into auxiliary port of any controller to send wake-up signal.
032.592



Retro-Reflectors

2.18" Dia. 032.218
3" Dia. 032.2185

Connector Covers

Upstream Connector Cover 032.010
Downstream Connector Cover 032.011

CABLE COMPONENTS

Power Isolation Cable

Required to isolate DC power when joining conveyors w/ separate IOPs utilizing no more than one set of I/O boards.

Standard Push-On 032.562
NEMA 4X Screw-On 032.5625

IOP Isolation Cable

Required to isolate DC power and input/output signals when joining two conveyors with separate IOPs, both utilizing I/O boards.

Standard Push-On 032.570
NEMA 4X Screw-On 032.5705

Extension Cable (Zone to Zone Communication)

Available in 3 and 10 ft. lengths. Used to extend zone controller cable when necessary.

Standard Push-On 3 ft. 032.560
Standard Push-On 10 ft. 032.561
NEMA 4X Screw-On 3 ft. 032.5605
NEMA 4X Screw-On 10 ft. 032.5615



Push-On
Type Cable

EZLOGIC® COMPONENTS

NOTE: All GEN3 EZLogic® Components are List Price.

CABLE COMPONENTS (continued)

Nano Extension Cable

Used to extend auxiliary devices or remote transducer cable. Available in the following lengths:

1 ft.	032.565
2 ft.	032.566
3 ft.	032.567
6 ft.	032.568

Power Splitter

Used to connect two conveyors located side by side to one IOP. Requires 2 power supply T cables. Maximum total of 50 zones.

032.569



SPECIAL USE COMPONENTS

Diffuse Type Zone Controller

Zone controller including mounting base and unitized diffuse transducer with adjustable sensitivity (through programming). 24 in. cable.

032.503



Remote Retro-Reflective Transducer

Attaches to any remote zone controller and allows transducer to be mounted separate from controller.

032.511



Remote Diffuse Transducer

Attaches to any remote zone controller and allows transducer to be mounted separate from controller.

032.512



Remote Retro-Reflective Transducer (Dual with T Cable)

For use in dual head applications. Attaches to any remote zone controller and allows addition of second remote transducer.

032.514

Remote Diffuse Transducer (Dual with T Cable)

For use in dual head applications. Attaches to any remote zone controller and allows addition of second remote transducer.

032.515

Remote Diffuse Transducer (Narrow Beam, Dual with T Cable)

For use in dual head applications. Has narrow beam for use with close roller centers. Attaches to any remote zone controller and allows addition of second remote transducer.

032.516

