

Webb Hand Pushed Trolleys

500 to 4000 pound capacity

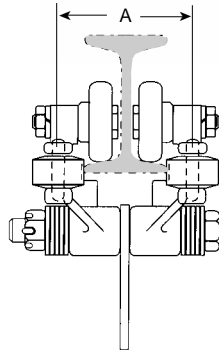
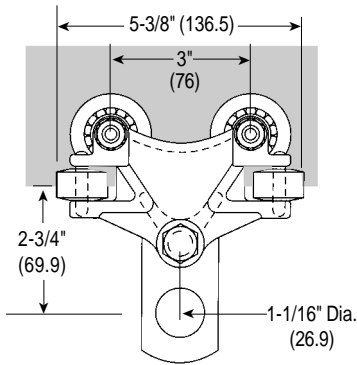
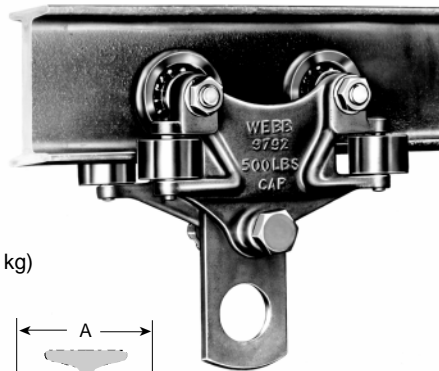
Featuring...
Red Seal®
Trolley Wheels

PART NO. **9792**

1/4 ton capacity

I-Beam sizes: 2-5/8", 3", 4"

Min. horizontal radius 12" (304.8 mm)
Dia. of load link bolt 1/2" (12.7 mm)
Weight 8.63 pounds (3.9 kg)



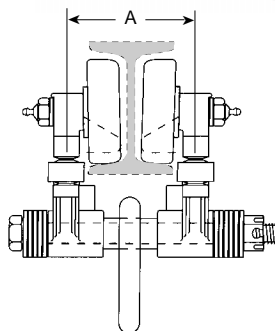
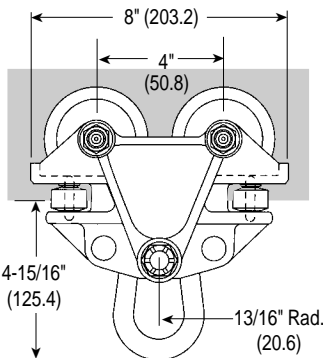
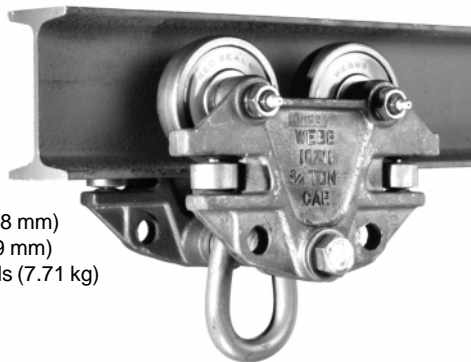
Beam Size	A	
	inch	mm
2-5/8"	3	76.2
3"	3-9/16	90.5
4"	3-7/8	98.4

PART NO. **10711**

3/4 ton capacity

I-Beam sizes: 4", 5", 6"

Min. horizontal radius 12" (304.8 mm)
Dia. of load link bolt 5/8" (15.9 mm)
Weight 17 pounds (7.71 kg)



Beam Size	A	
	inch	mm
4"	4	101.6
5"	4-3/8	111.7
6"	4-3/4	120.6

Retainer-type Red Seal trolley wheels have been developed specifically for rugged conveyor applications. The wheel contains a Conrad-type single row precision bearing in steel or composite retainer ring with components and clearances designed for the most adverse conveyor applications.

These wheels have the lowest friction and highest load rating possible for a ball bearing of this size and style, promoting longer life and lower maintenance under all conditions.



Triple labyrinth seals
Deep case hardened outer race



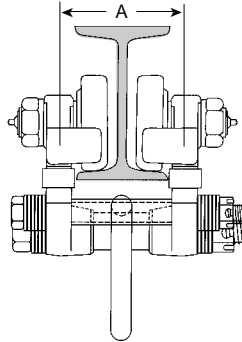
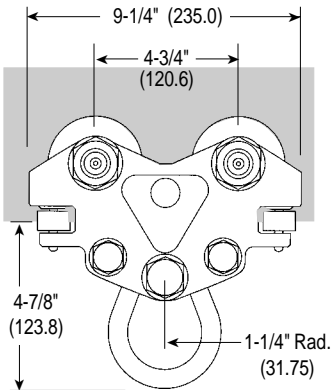
Optional Red Seal Guard™ with full contact grease seal

PART NO. **8360**

1 ton capacity

I-Beam sizes: 5", 6", 7", 8"

Min. horizontal radius 12" (304.8 mm)
 Dia. of load link bolt 3/4" (19.1 mm)
 Weight 27.75 pounds (12.58 kg)



Beam Size	A	
	inch	mm
5"	4-5/16	109.5
6"	4-11/16	119.1
7"	4-15/16	125.4
8"	5-5/16	135

Featuring...

Patented Side Rollers

All hand pushed trolleys have a patented side roller that keeps the trolley running smoothly, and doesn't allow the brackets to rub against the flange of the I-beam around the curves.

This rolling action prevents unnecessary wear on the conveyor track and trolleys, eliminates sloppy side sway, and offers greater ease in pushing and moving loads throughout the conveyor system.

When you need conveyor components fast, call...

1-800-Webb1st
(1-800-932-2178)

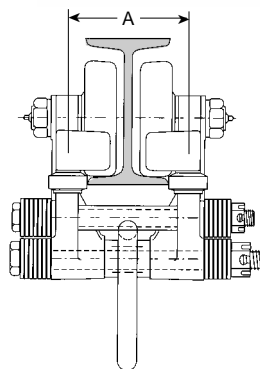
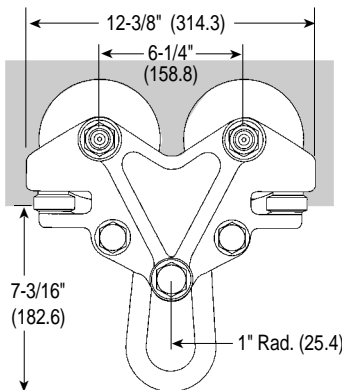
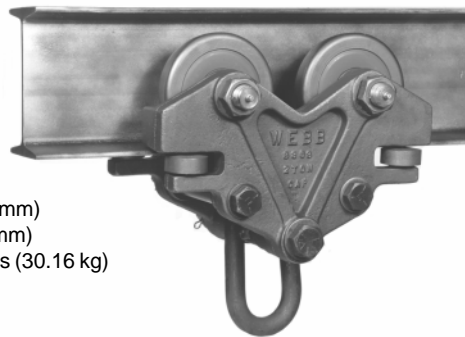
or Fax: 1-248-553-1253

PART NO. **8363**

2 ton capacity

I-Beam sizes: 6", 8", 10", 12"

Min. horizontal radius 36" (304.8 mm)
 Dia. of load link bolt 7/8" (22.2 mm)
 Weight 66.5 pounds (30.16 kg)



Beam Size	A	
	inch	mm
6"	5-5/16	135
8"	5-15/16	150.8
10"	6-9/16	166.6
12"	6-15/16	176.2

Regional Offices USA

East 1-860-767-7688
 Midwest 1-248-553-1295
 South 1-704-535-8866
 West 1-702-566-5308

Global Sales Offices

England +44-1908-270222
 Netherlands +31-40-280 1955
 China +86-314-4044-591
 India +91-80-6613-781
 Australia +61-(0)3-9464-3599
 Canada +1-905-547-0411
 Germany +49 (0)621-7988 427

Jervis B. Webb Company

MATERIAL HANDLING SYSTEM SPECIALISTS



World Headquarters

34375 West Twelve Mile Road
 Farmington Hills, MI 48331-5624 USA
 1-248-553-1220 FAX: 1-248-553-1228
 www.jerviswebb.com E-mail: info@jerviswebb.com