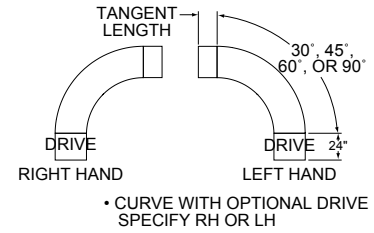


190-NSPC

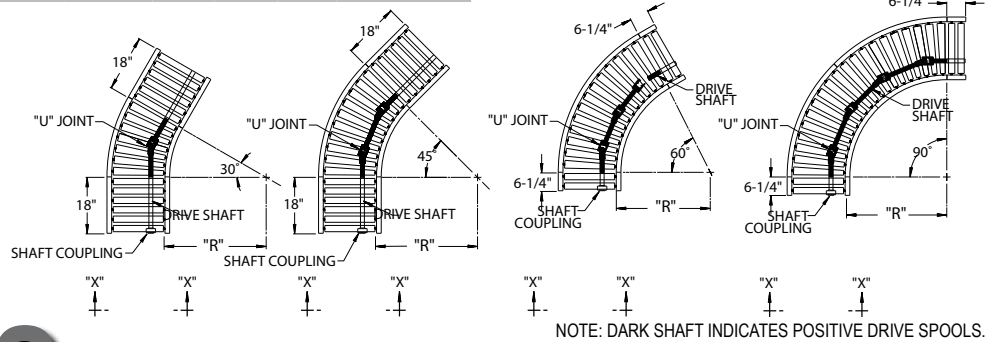
The 190 Spool Curves and Spurs are designed to be slave driven from the 190-NSP Conveyor. Curves are used where turns in the conveyor line are necessary. Spurs are used in diverging and converging applications.

- 12 Bed Widths
- Slave Driven from Model 190-NSP
- Adjustable MS-Type Floor Supports Available

| Between Rail Width | Overall Frame Width | "R" | Total Number of Rollers* | | | | WEIGHTS (Lbs.) | | | | |
|--------------------|---------------------|-----|--------------------------|--------|---------|---------|----------------|-----|-----|-----|-----|
| | | | 90° | 60° | 45° | 30° | 90° | 60° | 45° | 30° | |
| 13" | 16" | 24" | 16T/4S | 10T/4S | 8T/12S | 5T/12S | 179 | 144 | 157 | 132 | |
| 15" | 18" | | 222 | 184 | 183 | 151 | | | | | |
| 17" | 20" | | 235 | 197 | 192 | 158 | | | | | |
| 19" | 22" | | 248 | 209 | 202 | 165 | | | | | |
| 21" | 24" | | 32 1/2" | 20T/4S | 12T/4S | 10T/12S | 6T/12S | 259 | 224 | 211 | 173 |
| 23" | 26" | | | 281 | 233 | 222 | 181 | | | | |
| 25" | 28" | | | 285 | 246 | 231 | 189 | | | | |
| 27" | 30" | 299 | | 258 | 241 | 199 | | | | | |
| 31" | 34" | 48" | 28T/4S | 20T/4S | 14T/12S | 10T/12S | 437 | 338 | 313 | 247 | |
| 33" | 36" | | 452 | 353 | 326 | 259 | | | | | |
| 37" | 40" | | 484 | 380 | 349 | 271 | | | | | |
| 39" | 42" | | 503 | 395 | 361 | 285 | | | | | |

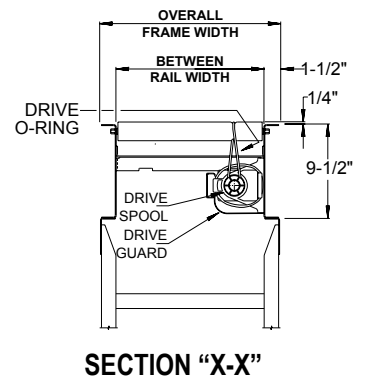


*T = TAPERED S = STRAIGHT
All weights in catalog are conveyor weights only. Accessories, crating, etc., are not included.

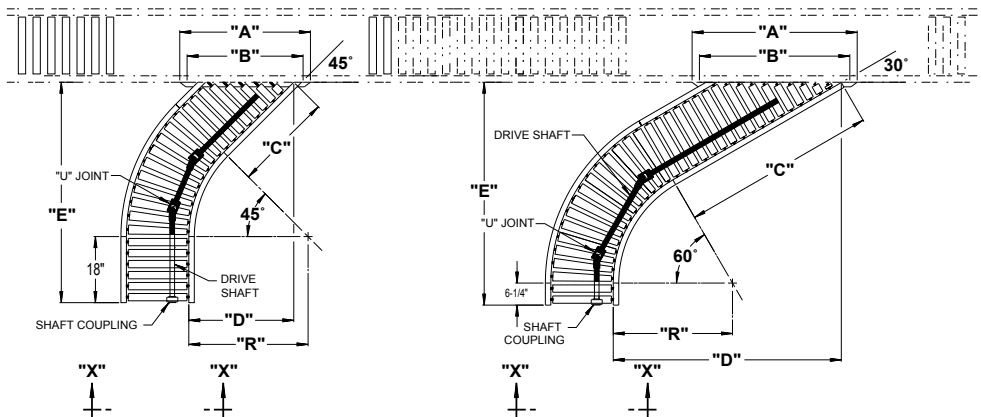
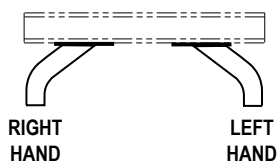


190-NSPS

| Between Rail Width | Overall Frame Width | "R" | "A" | | "B" | | "C" | | "D" | | "E" | | Number of Rollers* | | WEIGHTS (Lbs.) | | |
|--------------------|---------------------|-----|---------|-----|-----|-----|-----|-----|---------|-----|-----|---------|--------------------|---------|----------------|-----|-----|
| | | | 45° | 30° | 45° | 30° | 45° | 30° | 45° | 30° | 45° | 30° | 45° | 30° | 45° | 30° | |
| 13" | 16" | 24" | 29" | 38" | 27" | 36" | 21" | 30" | 21 7/8" | 38" | 50" | 42 1/4" | 8T/12S | 10T/11S | 173 | 176 | |
| 15" | 18" | | 32" | 41" | 30" | 39" | | | | | | | | | 230 | 263 | |
| 17" | 20" | | 35" | 47" | 33" | 45" | | | | | | | | | 240 | 274 | |
| 19" | 22" | | 38" | 50" | 36" | 48" | | | | | | | | | 250 | 283 | |
| 21" | 24" | | 32 1/2" | 41" | 53" | 39" | 51" | 36" | 54" | 35" | 63" | 66 3/8" | 61 3/8" | 10T/17S | 12T/19S | 259 | 293 |
| 23" | 26" | | | 44" | 56" | 42" | 54" | | | | | | | | | 268 | 303 |
| 25" | 28" | | | 47" | 62" | 45" | 60" | | | | | | | | | 280 | 316 |
| 27" | 30" | 50" | | 65" | 48" | 63" | | | | | | | | | 288 | 325 | |
| 31" | 34" | 48" | 56" | 74" | 54" | 72" | | | | | | | | 410 | 499 | | |
| 33" | 36" | | 59" | 77" | 57" | 75" | 48" | 75" | 48" | 89" | 86" | 85 1/2" | 14T/21S | 20T/26S | 422 | 513 | |
| 37" | 40" | | 65" | 86" | 63" | 84" | | | | | | | | | 446 | 540 | |
| 39" | 42" | | 68" | 89" | 66" | 87" | | | | | | | | | 457 | 553 | |

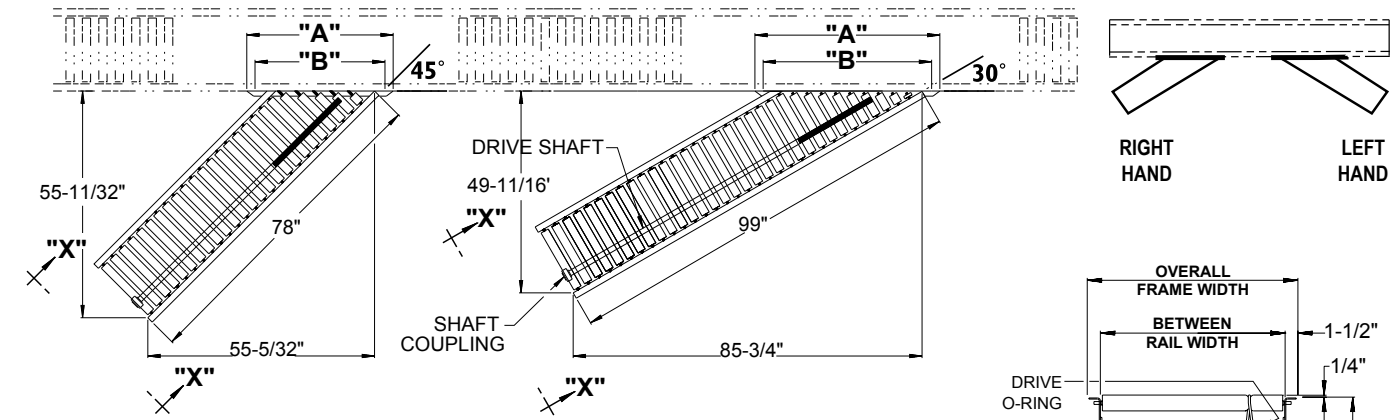


*T = TAPERED S = STRAIGHT
All weights in catalog are conveyor weights only. Accessories, crating, etc., are not included.



NOTE: DARK SHAFT INDICATES POSITIVE DRIVE SPOOLS.





NOTE: DARK SHAFT INDICATES POSITIVE DRIVE SPOOLS.

| Between Rail Width | Overall Frame Width | "A" | | "B" | | WEIGHTS (Lbs.) | |
|--------------------|---------------------|-----|-----|-----|-----|----------------|-----|
| | | 45° | 30° | 45° | 30° | 45° | 30° |
| 13" | 16" | 29" | 38" | 27" | 36" | 177 | 224 |
| 15" | 18" | 32" | 41" | 30" | 39" | 184 | 233 |
| 17" | 20" | 35" | 47" | 33" | 45" | 191 | 241 |
| 19" | 22" | 38" | 50" | 36" | 48" | 198 | 249 |
| 21" | 24" | 41" | 53" | 39" | 51" | 204 | 256 |
| 23" | 26" | 44" | 56" | 42" | 54" | 210 | 262 |
| 25" | 28" | 47" | 62" | 45" | 60" | 219 | 272 |
| 27" | 30" | 50" | 65" | 48" | 63" | 225 | 278 |
| 31" | 34" | 56" | 74" | 54" | 72" | 237 | 290 |
| 33" | 36" | 59" | 77" | 57" | 75" | 242 | 296 |
| 37" | 40" | 65" | 86" | 63" | 84" | 253 | 306 |
| 39" | 42" | 68" | 89" | 66" | 87" | 256 | 310 |

All weights in catalog are conveyor weights only. Accessories, crating, etc., are not included.

| Overall Frame Width | LOAD CAPACITY CHART | | | | |
|---------------------|------------------------------------|-----------------------------------|-----|--|-----|
| | 190-NSPC Capacity Per Curve (Lbs.) | 190-NSPS Capacity Per Spur (Lbs.) | | 190-NSPSS Capacity Per St. Spur (Lbs.) | |
| | | 45° | 30° | 45° | 30° |
| 16" | 240 | 300 | 285 | | |
| 18" to 30" | 300 | 405 | 435 | 375 | 480 |
| 34" to 42" | 450 | 540 | 720 | | |

• STANDARD SPECIFICATIONS

BED—Roller bed with 2 1/2 in. dia. tapered to 1 1/16 in. dia. x 14 ga. galvanized and 1.9 in. dia. roller x 16 ga. galvanized tube. Mounted in 9 1/2 in. x 12 ga. powder painted formed steel channel frame.

SLAVE DRIVEN—Curves and spurs are slave driven from drive shaft of Model 190-NSP conveyor. Shafts are coupled by chain coupling at bed joints.

DRIVE SHAFT—1 in. dia. steel shaft extends full length of conveyor, coupled with universal joints (U joints) at necessary intervals.

DRIVE SPOOLS—2 in. dia. Delrin spool held in place on drive shaft with spool spacers.

DRIVE GUARD—Underside of drive shaft with spools and drive o-rings guarded full length of conveyor.

DRIVE O-RING—3/16 in. dia. polyurethane o-ring from drive spool to tread roller.

BEARINGS—Sealed, pre-lubricated, self-aligning, ball bearings with eccentric lock collar on drive shaft. Pre-lubricated ball bearings in tread rollers.

SPLICE PLATES—Standard for connecting to 190-NSP.

CAPACITY—See Load Capacity Chart.

FLOOR SUPPORTS—Now supplied as optional equipment.

• OPTIONAL EQUIPMENT

FLOOR SUPPORTS—MS Type floor supports are available with a wide range of adjustment. Specify top of belt or roller elevation. One support required at every bed joint and ends of conveyor. Holes in feet for lagging to floor. Knee braces recommended above MS-6 support.

CONVEYING SPEED—Other constant and variable speeds from 30 to 120 FPM. Over 120 FPM timing belt drive recommended. Capacity affected with speed change.

DRIVE—24 in. long drive section replaces standard 6 1/4 in. or 18 in. tangent on end of 190-NSPC or 190-NSPS. No change on 190-NSPSS. Specify RH or LH.

GUARD RAILS—Adjustable Universal Channel Guard Rail, fixed channel or type A or B angle. **Note:** If product comes in contact with guard rails, product flow will be affected.

POLY-TIER SUPPORTS—36 in. to 120 in. support heights in 6 in. increments. Knee braces supplied.

CEILING HANGERS—5/8 in. dia. x 8 ft. long unplated rods fully threaded. Other lengths and galvanized rods available.

OPTIONAL TANGENTS—Available in 3 in. increments up thru 48 in. long.